



# THE SKETCH PAD

## HOCKADAY MUSEUM of ART MEMBERS' NEWSLETTER

Hatred, rancor, and the spirit of vengeance are useless baggage to the artist. His road is difficult enough for him to cleanse his soul of everything which could make it more so. - *Henri Matisse (1869-1954)*

### Montana's Antiques & Art Fair Offers Appraisals with Antiques Roadshow Tickets on Sale Now

The Hockaday Museum's second annual Montana's Antiques and Art Fair will be held September 1 through September 3 at the O'Shaughnessy Center in Whitefish. The fair will include more than 15 vendors selling antiques, books, prints, and western art, as well as appraisals by Ken Farmer, J. Michael Flanigan and Doug Deihl, three regular guest appraisers on the popular PBS television series Antiques Roadshow.

Appraisals will be conducted on Saturday, September 2 from 9 a.m. to 1 p.m. and from 2 p.m. to 6 p.m. and on Sunday from 10 a.m. to 1 p.m. and from 2 p.m. to 4 p.m. Appraisal tickets are \$30 each, which includes a verbal appraisal of one item (no collections) and admission to the Fair, with a maximum of 3 tickets per person. All items must fit through a standard door and be moved by the owner.

With this newsletter announcement, members are getting an opportunity to purchase tickets before the general public. Last year's tickets sold out in one day, so call 755-5268 to purchase your tickets now!

Ken Farmer became an American antique collector and

*Continued on page 5*

### Attention Member Artists

Members Only! - A Members' Salon  
October 12–December 19

The Museum invites all artists to participate in the fifth annual *Members Only! - A Members' Salon*, which is open to all media and all artists who are Hockaday members as of September 1. This year's theme is "Creative Inspirations" and each artist must include an artist statement that begins with "I create art because..."

One piece will be accepted from each member artist. Two-dimensional pieces must be framed and ready to hang and no larger than 18 x 24 inches, including the frame. Works must have been completed within the last year. If you would like to participate, please mail or deliver to the Hockaday an artist statement and the \$20 entry fee, which helps cover the costs of mounting, promoting the exhibit, and a \$200 cash prize for the 1st Place People's Choice Award winner and a \$100 cash prize for the 2nd Place People's Choice Award winner and more. **The deadline to RSVP your participation with your entry fee and artist statement is August 29. Deliver your artwork to the Museum between August 29 and September 23.** Call 755-5268 or visit [www.hockadaymuseum.org](http://www.hockadaymuseum.org) for more information.



The Year of the Museum (YOM) is a celebration of the wondrous, amazing and exciting things that museums do to enrich our lives and our communities. Organized by the American Association of Museums, YOM is a national effort to bring together the collective voice of the museum field to capture the public's attention and imagination. As part of the national publicity effort, AAM published a landmark book titled *Riches, Rivals, and Radicals: 100 Years of Museums in America*, written by Marjorie Schwarzer, which is now available for purchase in the Hockaday's Off the Wall Gift Gallery.

### *Inside this issue:*

- 2 Current Exhibitions
- 3 Upcoming Exhibitions
- 4 Museum News & President's Message
- 5 Director's Report
- 6-7 Education Schedule
- 8 Guild Update
- 10 Arts in the Park Entertainment Schedule
- 12 Membership Information

## THOMAS HART BENTON (1889-1975): THE AMERICAN STORY

Through July 28

View classic scenes that symbolize the American way of life through the familiar works of American Regionalist artist Thomas Hart Benton (1889-1975). Benton belonged to the last generation of artists that wanted to provide Americans with a democratic art easily accessible to the average citizen. Regionalism refers to the work of a number of rural artists, mostly from the Midwest, who came to prominence in the 1930s. What they shared was a humble, anti-modernist style and a desire to depict everyday life. Benton was at the forefront of the American Scene movement along with Grant Wood who is best known for his famous painting of "American Gothic." Benton's belief was that art is renewed from life, not from art. This was a direct reaction to the work of Jackson Pollock, one of Benton's principal students at the Art Students League from 1930 to 1933. The exhibition includes two of Benton's major oil paintings, *The Twist* and *Ozark Reflections*, along with fifteen etchings and two bronze works, all on loan to the Museum from a private collection.



*Forward Pass*, lithograph, 1972,  
13 x 20 inches, by Thomas Hart Benton,  
Private Collection

## MONTANA PAINTERS ALLIANCE

Through July 28 - Sponsored by Settlers West Gallery, Tuscon, AZ

Experience the grandeur of Glacier National Park through the breathtaking works of members of the Montana Painters Alliance who participated in the group's 2005 Fall paint out in Glacier National Park. Artists include Susan Blackwood (Bozeman), Josh Elliott (Helena), Thomas English (Great Falls), Howard Friedland (Bozeman), Laurie Stevens Gilleon (Cascade), Tom Gilleon (Cascade), Dave Hodges (Big Timber), Phil Korell (Great Falls), Nick Oberling (Kalispell), Steve Oiestad (Ft. Shaw), Bob Phinney (Florence), Aaron Schuerr (Livingston), Steve Seltzer (Great Falls), Janet Sullivan (Missoula), Ron Ukrainetz (Great Falls), Jeff Walker (Ft. Shaw), Joe Wayne (Livingston).



*Many Glacier Morning*, oil,  
12 x 16 inches, by Jeff Walker

## CALENDAR OF EVENTS

## July

- 6 Works by Blackfeet Artists Gary Schildt and King Kuka opens
- 21-23 Arts in the Park in Depot Park
- 28 Montana Painters Alliance and Thomas Hart Benton exhibitions close

## August

- 10 Opening Reception for Frances Senska, David Secrest, and Works by Blackfeet Artists Gary Schildt and King Kuka

## September

- 1-3 Montana's Antiques and Art Fair
- 2 Works by Blackfeet Artists Gary Schildt and King Kuka closes
- 7 Opening Reception for *The Lens of Ed Gilliland* from 5:00 to 7:30 p.m. with a pre-reception lecture by the artist on the philosophy of his photography at 4:00 p.m.

## Opening Reception



*Feast*, hand forged steel,  
by David Secrest,  
7' x 20" x 20"

NEW ACQUISITIONS:  
WORKS OF BLACKFEET ARTISTS  
GARY SCHILDT AND KING KUKA  
(1946-2004)

FRANCES SENSKA:  
A LIFE IN ART

REFLECTIONS:  
PATTERNS IN WOOD & METAL  
BY DAVID SECREST

Thursday, August 10 from 5:00 to 7:30 p.m.

Pre-reception Lecture at 4:00 pm:

"A Quiet, Insistent Beauty:

The Life and Work of Frances Senska"

by Brandon Reintjes, Curator of Exhibitions &  
Collections, Holter Museum of Art, Helena

## NEW ACQUISITIONS - WORKS OF BLACKFEET ARTISTS KING KUKA &amp; GARY SCHILDT

July 6 through September 2 - Sponsored by Wells Fargo Bank, NA

View recent donations to the museum's permanent collection of eight bronzes by Gary Schildt from his "Huck Finn" series and sixteen paintings by King Kuka (1946-2004). Gary Schildt, born in 1938, received his art training at the San Francisco Academy of Fine Art and the City College in San Francisco, where he studied both commercial art and photography. He is a founding member of the Northwest Rendezvous Group, a recipient of the Montana Governor's Award for the Arts, and is well known for his oil paintings and bronze sculptures of contemporary Blackfeet life. King Kuka, whose Indian name was Black Wolf, attended the Institute of American Indian Arts in Santa Fe and the University of Montana. Kuka's art conveys a powerful source of spiritualism and has been described as ethereal American art. Thanks to a gift of Nancy and John Hubble, Kuka's paintings will be preserved in the Museum's permanent collection.



*Blackfeet Medicine Shield*, mixed media, by King Kuka, Gift of Nancy and John Hubble

## FRANCES SENSKA: A LIFE IN ART

August 5 through October 1 - Sponsored by Bruce Boody Landscape Architects  
Touring under the Museum and Art Gallery Directors Association of Montana

Get a glimpse into one of the most influential and often overlooked ceramic artists in this major retrospective of work by Frances Senska. Senska was born in 1914 in Batanga, Cameroun, Africa and now is a longtime resident of Bozeman. Although Senska is known primarily as a potter, this exhibition includes early prints and works on paper, as well as an overview of her prolific ceramic work, which helped shape the nature of contemporary ceramics today and Senska's work influenced such internationally known artists as Peter Voukos and Rudy Autio. Her beautiful ceramics have a quiet power to impress each person individually. Each piece in this retrospective exhibits Senska's masterful craftsmanship and lifelong devotion to art.



*YABABO Pot*, stoneware, n.d., 9 x 7 inches D, by Frances Senska, collection of the Holter Museum of Art, museum purchase

## REFLECTIONS: PATTERNS IN WOOD &amp; METAL BY DAVID SECREST

August 5 through October 1 - Sponsored by Semitool

See an impressive installation of sculptural works by Somers artist David Secrest. Created from a diverse repertoire of materials including steel, iron, wrought iron and sand-cast bronze and over thirty years of experimentation and material manipulation, Secrest's work is characterized by surfaces of tessellated tile and folded pattern-welded techniques. His chosen medium influences the outcome but through the creative process, he experiments with different forms and how they relate to the finished structure. Much of his work incorporates patterns influenced by the natural textures found in his medium.

## THE LENS OF ED GILLILAND

September 7 through October 10 - Sponsored by Moose's Saloon

Experience scenes of Northwest Montana, Arizona, Utah, California, and the West by award-winning landscape photographer Ed Gilliland of Kalispell. Gilliland has done both black & white and color photographs, but is best known for his beautifully composed color prints of Glacier Park. His purpose is to capture nature's beauty on film for preservation and enjoyment. He uses strong, sharp foregrounds, which give the allusion of being able to walk into the picture and become part of the scenery.

## Russell Chatham Series Featured

*New Works Displayed Monthly in Foyer*

The Hockaday Museum is very fortunate to have in its collection the *Missouri Headwater Series* by Russell Chatham, donated by Marion and Duff Gerrish. Chatham, a Livingston artist, began printmaking in 1981, and is today regarded as one of the world's foremost lithographers. In this series, he created one lithograph for each month of the year, reflecting on the landscape of Montana as the seasons changed. Over the next year, each month's lithograph will be displayed in the front foyer of the Museum.

## *Welcome Mary & Christian*

The Hockaday Museum is pleased to welcome Mary Carlisle as the new Development Specialist and Christian Mascho as Museum Services/Registrar.

Prior to moving to Kalispell, Mary spent more than 20 years working with high technology companies to develop strategic plans. She also served as an adviser to the boards of Planned Parenthood and Foster Children. For the last year she was a Development Coordinator with Youth Homes, Inc. She also serves as a board member for Violence Free Crisis Line. She has two daughters and for fun she takes advantage of all the Flathead has to offer - skiing, snowshoeing, kayaking, hiking and riding her horse.

Originally from Philadelphia, Pennsylvania, Christian was raised in Whitefish. He is an artist practicing in ceramics and oil painting. He has attended classes for the past three years at Flathead Valley Community College, and plans to have his Associates Degree at the end of 2006. He enjoys local music and nightlife, hiking, biking, skateboarding, and snowboarding. He considers this position the beginning of a life long career in art.

## Former Employee Pursues Theater Career

Jenny Granrud started as an intern with the Hockaday Museum in 2002 and became an employee in 2003. Today, Jenny has gone on to a career as a sound and lighting technician in New York City, where her name is featured on Off Broadway Playbills. Congratulations!



We often hear what an exciting and vibrant organization the Hockaday Museum is and what an important role it plays in nurturing the creative spirit here in the Flathead Valley.

The Hockaday plays a vital part in stimulating the artistic community and artists' passion for creating, as well as educating and promoting the arts to the public. This role is even more important when discussed in the same breath as cultural tourism.

The Hockaday is a major point of interest for visitors to this area. Our focus on not only local artists, but also Glacier National Park art and culture, makes it an exciting stop for tour groups, family visitors and vacationers. A strong cultural environment is necessary if we want visitors to stay in the area longer and spend their dollars locally.

Private donations make up a significant portion of the Hockaday Museum's support. The Museum has many businesses to thank for their contributions, and they are listed in our Annual Report and inside the entrance to the Museum. In the area of business support though, the Museum could do a lot better.

As the Museum works to meet the new demands developing due to the enormous growth in the Valley, I would encourage all business owners to invest in the Museum and become a partner in strengthening this cultural asset. The Hockaday improves our quality of life, promotes cultural tourism, and strengthens our local economy in many ways. In addition to providing exhibitions and educational programs, the Museum hangs beautiful banners along Kalispell's Main Street, the main entrance to the Flathead Valley and organizes community events like *Arts in the Park*, *Montana's Antiques and Arts Fair*, *Kalispell Art Walk and Christmas Stroll*, and the new *Museums & Music: A Festival of Culture*.

There are many benefits to being a business member or sponsoring an event or exhibition. Call the Hockaday or ask any Board of Member of the Museum. We would be happy to give you more information.

- Fred Leistiko, President of the Board



Our Education Department has been very busy over the past few months. Since January, our Director of Education, Kathy Martin has shown over 1,990 children through our school tours program. This is more students taking part in school tours so far this year than did all of last year.

Schools in Polson, West Glacier, Columbia Falls, and Whitefish, as well as all schools in Kalispell are participating in our education programs. This major increase has meant that we have needed to invest in more chairs, open the Museum for extended hours, and have additional staff and volunteers providing tours to accommodate the demand. It's been rewarding and energizing to witness so many young people interested in and learning about art.

Our education program is geared to all ages of students and includes instruction on art terms and techniques, art history, and cultural history of the Flathead Valley. It also attracts a broad range of student groups. Montana Art Interscholastic visited the Museum in March, bringing in students from Eureka, Florence, Missoula, Wolf Point, Libby, Great Falls and other areas.

Because of the Museum's focus on the early art history of this area, and how the Great Northern Railroad promoted tourism by hiring artists, photographers and authors to paint, photograph and write about Glacier National Park, Flathead High School's tourism class has also taken advantage of our school tour program.

We would like to welcome two new docents to the Museum's Docent Program. Mignon Latimer and Gayle Bauman are donating their time and talents providing tours. Mignon brings us her experiences as a docent for the Phoenix Art Museum and Gayle holds an MA in art and studied at the Art Institute of Chicago.

Please see page 6 for more information on the Docent Program and contact Kathy if you would like to get involved.

*-Linda Engh-Grady, Executive Director/Curator*

### *Antiques & Art Fair - Continued from page 1*

dealer more than 25 years ago and entered the auction, appraisal and real-estate brokerage business in the mid-1970s. His areas of expertise include Southern material culture, American furniture, folk art, decorative arts, musical instruments (excluding violins, brass and woodwinds), collectibles and fine art.

Doug Deihl, Director Of Skinner Inc.'s American Indian & Ethnographic Art department oversees the consignment, appraisal, preparation and auction of Native American Art including paintings, artifacts, pottery, rugs, textiles, dolls, jewelry, and American West photography. He brings a wide array of Eskimo, Spanish Colonial, African, and Tribal art to auction each year.

J. Michael Flanigan has been working on and dealing in classic American furniture for 28 years. Seven of those years were spent repairing, restoring, and conserving antique furniture at the firm of J.W. Berry & Son, which had been in business since the late 19th century. He served as the administrator of the Kaufman Americana Foundation where he oversaw the exhibition of the collection at the National Gallery of Art. He is now a private dealer in Baltimore.

## **MONTANA'S ANTIQUES AND ART FAIR**

**September 1-3**

**O'Shaughnessy Center in Whitefish**

*Antiques, books, prints, western art, & more*

Friday, September 1, 2006 Evening Preview  
with Food and Cash Bar, 5 to 8 p.m.

Lecture by Ken Farmer, September 1, 4 to 5 p.m.

Saturday, September 2, 10 a.m. to 6 p.m.

Sunday, September 3, 10 a.m. to 4 p.m.

\$5 daily admission (\$4 for museum members)

\$15 Evening Preview and weekend-long admission

\$25 Evening Preview, weekend-long admission and  
lecture by Ken Farmer

\$30 Appraisal of one item (tickets are limited)

**Generously sponsored by American Homestead**

**Mortgage, Coldwell Banker Wachholz & Co.,**

**Kalispell Center Mall, Riel Antiques, and**

**Summit Health Center NW**

*A Guild Benefit for the Hockaday Museum of Art*

# NEWS FROM THE EDUCATION DEPARTMENT

## Student Art Show Praised by Teachers

This year's annual New Artists exhibition, featuring artwork by students attending area high schools, was again well-received by participating schools and students and the community, who always enjoy seeing the amazing local talent of our youth.

"Our administration, staff, students, and community gratefully acknowledge your efforts to showcase young artists...It is because of people like you that our community can acknowledge and embrace the efforts and talents of our next generation of artists. Once again, thank you for your continued support of all the valley schools."

- Lonnie Collinsworth, Art Teacher, Whitefish High School

## Call for Docents

### Become a Hockaday Museum of Art Docent

What is a docent? It is someone who is interested in learning about art and sharing it with others. The word docent comes from the Latin word *docere*, meaning to teach. In the museum world, it has come to mean someone who is a guide and volunteer educator. Docents conduct tours of the museum's exhibitions to school and other groups. Some tours include hands on experiences is making art. Volunteering as a docent at the Hockaday involves a commitment of 3 hours or more per month, depending on your schedule.

If you are interested in becoming a Hockaday Museum Docent, call the Director of Education Kathy Martin at 755-5268 for more information.

## To Register for Classes

Unless otherwise indicated, all classes are taught by the Hockaday's Director of Education Kathy Martin whose creative ideas and positive energy provide a constructive learning environment for artists of all ages and ability levels.

To register for art classes, call 755-5268, visit [www.hockadaymuseum.org](http://www.hockadaymuseum.org) for a mail-in registration form, or stop in the Hockaday Museum at 302 2nd Ave. E. in Kalispell.

## Summer Workshops for Adults & Teens

### Collage & Mixed Media

Friday, July 7, 10 a.m. to 4 p.m. (with hour break)

Guest artist: Lynne Averill

\$50/members

\$55/non-members

Ages: 15 and up



Lynne Averill is a graduate of the Maine College of Art with a BFA in graphic design. Her recent artistic ventures are in collage and mixed media, which she has been teaching at The Center for the Book in San Francisco. She is visiting Whitefish for the summer.

Expand your repertoire of image possibilities by exploring mixed media and collage. Lynne will show how to create unique images for book projects and card making by combining papers, photos, found objects and more. She discusses the materials and media best suited to collage work and offers advice on composition and design. You'll leave class with several finished pieces.

Class fee includes a selection of specialty papers (not available locally), glues and other materials. Students are asked to provide small paint brushes to use with glue, an acid free glue stick, a metal spoon for burnishing, scissors, and rags. Optional items are photos, magazine pictures, stamps, ribbons, buttons, and papers.

### Plein Aire Painting at Bibler Gardens

August 3, 4 & 5, 9 a.m. - 3 p.m. (with hour break)

\$70/members

\$75/non-members

August 3 - Watercolor Painting with Karen Leigh

August 4 - Oil Painting with Thomas English

August 5 - Pastel Painting with Lisa Schaus

By special arrangement with the foundation that maintains the Bibler Gardens, the Hockaday Museum is offering 3 days of plein aire painting workshops featuring a different guest artist and medium each day. Sign up for one or more sessions and take advantage of this opportunity to learn from some of Montana's best artists and instructors. A supply list, determined by the instructor, will be provided to registered students. Class size is limited to 12 students per day.

# CLASSES AND WORKSHOPS FOR CHILDREN

## *Summer Art Fun*

Different projects will be offered each day, so sign up for all sessions in each interest area in order to do all the activities. Class size is limited and pre-paid registration guarantees your space. All classes are taught by Hockaday Director of Education Kathy Martin, and prices include supplies.

### **Playing With Art**

July 5 & 6 / 10:00 a.m.-12:00 noon (ages 6-9)

July 5 & 6 / 12:30-2:30 p.m. (ages 10-14)

\$6/Family Members per session or \$8/non-members

Use art reproductions to make and play games with famous (and not so famous) art and artists. Create your own puzzle cubes, and card games to take home. Help make giant sized “art masterpiece” puzzles.

### **Glacier Inspirations**

July 12, 13, 19, 20 / 10:00 a.m.-12:00 noon (ages 6-9)

July 12, 13, 19, 20 / 12:30-2:30 p.m. (ages 10-14)

\$6/Family Members per session or \$8/non-members

View paintings of Glacier National Park in our galleries. Try your hand at painting landscapes and wildlife using different techniques, painting styles, and materials. Paintings inspired by Glacier Park scenery or animals will be created each day.

### **Art Adventures with Huck Finn & Tom Sawyer**

July 26, 27, Aug 2 / 10:00 a.m.-12:00 noon (ages 6-9)

July 26, 27, Aug 2 / 12:30-2:30 p.m. (ages 10-14)

\$6/Family Members per session or \$8/non-members

Join us in creating art inspired by the adventures of Huck Finn and Tom Sawyer. We'll look at the story illustrations of Thomas Hart Benton and then make some of our own. Have fun creating adventure paintings and rafting sculptures.

### **Art Museum Mysteries**

Aug 9 & 10 / 10:00 a.m.-12:00 noon (ages 6-9)

Aug 9 & 10 / 12:30-2:30 p.m. (ages 10-14)

\$6/Family Members per session or \$8/non-members

Be an art fraud detective; solve the mystery of the stolen paintings. Create “Wanted” posters. Go on an art gallery scavenger hunt. Paint an art forgery.

### **Patterns & Textures**

Aug 16, 17, 23, 24 / 10:00 a.m.-12:00 noon (ages 6-9)

Aug 16, 17, 23, 24 / 12:30-2:30 p.m. (ages 10-14)

\$6/Family Members per session or \$8/non-members

Tour the galleries and be inspired by the sculptures of David Secrest and the artwork of Frances Senska. Design pattern pictures and learn how to turn them into colorful prints. Make a texture collage. Create your own sculpture.

## *Special Projects for Tweens & Teens*

### **Paper Mache Creatures**

Guest Instructor: Nancy Roberts

July 11,14,18, & 25 / 2:00–4:00 pm (Ages 10-14)

\$24/Family Members per session or \$32/non-members

Learn to make animal sculptures with paper mache artist Nancy Roberts. Nancy will share her secrets for making creatures that look real enough to walk, fly, or slither into a room. All sessions must be attended in order to complete the project.

### **Stained Glass Stepping Stones**

Instructor: Kathy Martin

Aug 8, 11, 15, 18 / 1:00-3:00 pm (Ages 11-17)

\$24/Family Members per session or \$32/non-members

Create stained glass mosaic designs and turn them into garden stepping stones! We will make our own patterns and pictures using colored glass, place them in a special mold, then mix and pour cement to create our stones. Students in this class will create a piece to take home and one for a Hockaday walkway. All sessions must be attended in order to complete the project.

## *Art Time*

Ages: Pre-school, accompanied by adult guardian

*New Time!* Wednesdays, July 5–August 23, 9:15 - 9:45 a.m. (Please note time change)

Free/Family Members, \$3/child for non-members

Registration not required

Hands on art projects and activities in the Discovery Gallery.



The Hockaday Guild is on the move! Sixty members and growing.

Guild members and their guests were treated to a very special luncheon at the Bibler Garden House on April 30. Yummy eats and great camaraderie! Outgoing President Joan Pfuhl presented the new Guild by-laws, Linda Eng-Grady spoke about current projects at the Hockaday, and incoming President Jane Wheeler presented some awards. The luncheon was organized by Nancy Westberg, Janet Bierrum and Beth Collier. Many thanks to Carol Bibler for providing this beautiful setting for the event.

Upcoming projects for the Guild include organizing and providing volunteers for *Montana Antiques and Art Fair* in September as well as providing volunteers for *Arts In The Park* in July. Both are major fundraisers for the Hockaday. The Guild will continue to assist with opening receptions for new exhibits and hopes to sponsor an educational workshop, the subject of which is yet to be determined.

Through the Hockaday Guild, each of us can make a real difference in the continued success of our wonderful museum. If you aren't already a member, join us. It's fun! The cost is only \$15 per year on top of your regular membership dues. Stop by the Hockaday or send your name and contact information and \$15 to Hockaday Museum of Art, Attn: Hockaday Guild, 302 2<sup>nd</sup> Ave. East, Kalispell, Montana, 59901.

- Marcia Siblerud, Secretary, Hockaday Guild



Guild Luncheon at the Bibler Home

**Interested in Volunteering?**

If you are interested in volunteering as a docent, at Arts in the Park, or at the Antiques and Art Fair, please call 755-5268.

CORPORATE SUPPORTERS  
SPOTLIGHT

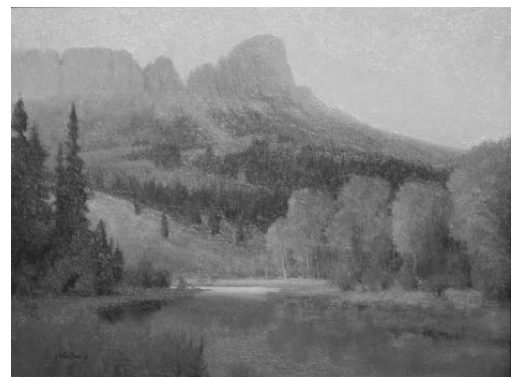


20 N. Main St., Kalispell 751-5052

Kalispell Center Mall is Northwest Montana's ultimate shopping experience. It includes major department stores, a full-service hotel, nationally-known retailers, and an assortment of one-of-a-kind specialty shops.

Many thanks to Kalispell Center Mall for providing support for Montana's Antiques and Art Fair.

**Hockaday Benefit Auction a Success**



Wilderness Pond, oil, by Jeff Walker, 2006  
People's Choice Purchase Award Winner

The Hockaday Museum of Art's fifth annual Benefit Auction of Miniatures and More held May 19 raised close to \$15,000 to support the Museum's exhibition and education programs. The top selling painting was *Polka* by Bye Bitney, which sold for \$2,000. More than 40 other miniature works were sold in addition to 37 small works from the very popular *Wall of Real Miniatures*, which featured postcard-sized works and small pottery pieces that were a 100% donation by the artist to the Museum. The Museum would like to thank the many artists who donated their work.

The People's Choice Purchase Award Winner, selected by the more than 120 attendees of the auction preview party held May 5, is "Wilderness Pond", an oil painting

Continued on page 11



# THANKS TO SUPPORTERS FROM MARCH 1 - JUNE 8, 2006

Thanks to all of our new and renewing members and donors from March 1 to June 8, 2006. Your support is critical!

## NEW & RENEWING MEMBERS

Joanne Adams  
Jean Agather  
Anderson's Masonry Hearth & Home  
David & Anna Marie Bailey  
Donald Baughman  
Bigfork High School  
Robert Bridges  
Jay & Susie Brown  
Regina Browne  
Mary Carvalho  
Peggy Casey  
Daniel & Susannah Casey  
Steve & Nancy Cawdrey  
Esther Chrisman  
Dana & Stephanie Christensen  
Connie & George Colonius  
Columbia Falls High School  
Susan Crawford  
Jack & Marsha Davis  
Nancy Davis  
Karen Davison  
Digital Planet  
Wanda Domrose  
Bob Drummond  
James Duncan  
Edgerton Elementary School  
Linda Engh-Grady & David Grady  
First Interstate Bank  
Dr. & Mrs. W.J. Gadpaille  
Donna Gans  
Beverly Gilman  
Gordon & Marilyn Graham  
Traci Gullede  
Toni & John Gunnerson  
Shirley Harryman  
Hatlen Investments  
Jean Helps  
Poul & Mary Houlberg  
William & Elizabeth Hupp  
Stephen Isley  
Patti Jacquemain  
Paula G. Johnson  
Stuart & Meoldy Johnson  
Linda Katsuda  
Rev. & Mrs. R.A. Kirchoffer  
Dr. & Mrs. Mark Kirk  
Phyllis Kirk-Parker  
M. Duane & Bev Larson  
LaSalle Lighting  
Jay & Mignon Latimer  
Doug & Susie Loomer  
Dan & Corinne Lundgren  
Bob & Kathy Lundgren  
Gary & Wendy Madison  
Richard & Hermine Makman  
Paul & Doris Masa  
Tom Matthews  
Paul Maurer  
McElroy & Wilken, Inc.  
Marvin Messing  
F.C. 'Buz' & Carole Meyer

Skulason & Jeanne Moe  
Florence Moffitt  
Beth Morgenstern  
Mountain West Bank  
Muldown Elementary School  
Heather Mumby  
Edward & Barbara Myers, III  
Pete & Carol Nelson  
Kathleen O'Neil  
Sen. & Mrs. Jerry O'Neil  
Tim & Mary Obermiller  
Ogle & Worm, PLLP  
Painted Horse Grille/Kalispell Grand Hotel  
Margaret Person  
Larry Len Peterson  
Joan Pfuhl  
Erdwin Pfuhl Jr.  
Plum Creek  
John and Souhier Rawlings  
Dawn Reisch  
Renate Reiss  
The Reiss Partnership  
Susan Rhein  
Kitty Rich  
Rocky Mountain Wine Co.  
Sterling Title Services  
Wayne & Sheryl Saverud  
Joann C. Schadewitz  
Tim & Lisa Schnee  
Robert & Julia Sherrick  
Winnie Simmonds  
Doug & Kim Skoczek  
Justin & Jennifer Sliter  
Jim & Virginia Sloan  
Stillwater Christian School  
Summit Preparatory School  
Diane Sock  
Linda Sole  
Mike & Judy Spence  
Leanne Starrett  
Jeanne Tallman  
Dr. J.W. Thiessen  
Trinity Lutheran School  
Calvin & Jean Triol  
Robert O'Neil & Barbara Truckner  
Bruce & Linda Tutvedt  
Rusti Warner  
Marcella Wells  
Robert & Nancy Westberg  
Walt & Helen Whirry  
Dr. & Mrs. R. Dennis Winkel  
Valley Bank of Kalispell  
Rae Ellen Zeits  
John Zoltek

## NEW GUILD MEMBERS

Jean Agather  
Anna Marie Bailey  
Carol Bibler  
Regina Browne  
Mona Charles  
Beth Collier  
Linda Ensign  
Paula Johnson  
Jean La Dow  
Bob & Kathy Lundgren  
Corinne Lundgren

Richard & Hermine Makman  
Robert Markle & Anne Scott-Markle  
Barbara Murray  
Mark Norley  
Joan Pfuhl  
Jesslyn Ross  
Marcia Sibley  
James Udick  
Faye Van Sickle  
Sandy Vermillion  
Jane Wheeler  
Jackie Wildgen  
Rae Ellen Zeits

## ANNUAL FUND

Luke LeClere  
Paul Masa

## PERMANENT COLLECTION

Montana Frameworks & Gallery  
Mark Norley

## ART ACQUISITION FUND

John & Patricia Case  
Dr. & Mrs. Van Kirke Nelson  
Everit & Nikki Sliter  
Justin & Jennifer Sliter  
Tom & Marilyn Waggoner III

## EVENT & EXHIBIT SPONSORSHIPS

C.M. Anderson Design  
Fun Beverage  
Goodman Realty/Red's Wines & Blues  
Imagination Station  
Kalispell Center Mall  
Kalispell Regional Medical Center  
Mann Mortgage  
Montana Expressions  
Settlers West Galleries, Inc.  
Simpson Motors  
The Athlete's Foot  
Valley Bank of Kalispell  
Whitefish Credit Union

## IN-KIND DONATIONS

Abrescia Fine Art & Pottery Studio  
American Printing  
Anderson Masonry Hearth & Home  
Heritage Hearth & Masonry  
Marsha Sibley

## OTHER DONATIONS

Bob & Kathy Lundgren  
Mary Jo Olson

## *Wish List*

Glass pitcher  
Glass punch bowl ladle  
Serving utensils  
Ziploc bags & freezer bags  
Plastic folding tables - 6 ft.  
Small stereo speakers  
Water cooler  
Digital projector  
Laptop computer  
*To donate, please call 755-5268 or deliver your donations to the Museum.*



Don't miss the 38th Annual Arts in the Park with over 100 booths offering high quality jewelry, clothing, photography, paintings, pottery, glass, and other artwork. Children will enjoy fun, hands-on art activities. Visitors of all ages will enjoy browsing the artistic creations of local, regional and national artists, watching exciting dance performances, listening to talented musicians, and eating fabulous foods.

*Entertainment Schedule*

**Friday, July 21**

- 10 am to 11 am - Highlanders *Scottish Bag Pipes*
- 11 am to Noon - Greg Grant *Classical Guitar*
- Noon to 1 pm - Two Medicine Lake Drummers *Blackfeet Drummers and Dancers*
- 2 pm to 3 pm - String Crossings *String Trio*
- 3 pm to 5 pm - Blue Onion *Blues with a Bite*

**Saturday, July 22**

- 10 am to 11 am - Rod Run Parade *Classic Cars on Main St.*
- 11 am to Noon - Stacey Board *Classical Singer/Guitar*
- Noon to 1 pm - Feat by Feet *Montana's Only Professional Tap Performance Co.*
- 1 pm to 1:30 pm - Greg Grant *Classical Guitar*
- 1:30 pm to 2 pm - Flatheaders Square Dance Club
- 2 pm to 4 pm - Cocinando *Latin Music*
- 4 pm to 4:30 pm - Western Line Dancers
- 4:30 pm to 5 pm - Country Cloggers

**Sunday, July 23**

- 10 am to 11 am - Steve Eckels *Classical Guitar*
- 11 am to Noon - Tra Le Gael *Celtic Winds Ensemble*
- Noon to 1 pm - Greg Grant *Classical Guitar*
- 1 pm to 2 pm - Blue Smoke *Country Music*
- 2 pm to 3 pm - LeftOver Biscuits *Bluegrass Band*
- 3 pm to 4 pm - Valley Voices *Choir*

The Hockaday Museum of Art Presents...

**ARTS** the 38th annual  
**IN THE PARK**

**JULY 21-23, 2006**

*Depot Park - Kalispell*

Friday 10-6 • Saturday 10-6 • Sunday 10-5

**Weekend Pass:** \$4 Advance Purchase or \$5 opening day of festival (includes free admission to the Hockaday Museum all weekend)

\$3/daily admission Free/ under 12 years of age

**Weekend Pass buttons available at:** CM Anderson

Design, Herberger's, Hockaday Museum of Art, Imagination Station in Kalispell and Whitefish, Paint Metal & Mud, and Wakefield's Beauty Connection in the Kalispell Center Mall

**Sponsored by:** The Athlete's Foot, CM Anderson Design, Imagination Station, Mann Mortgage, Montana Expressions West, Simpson Motors, Valley Bank of Kalispell, Whitefish Credit Union

*Save the Date!*

**Museums & Music:**

**A Festival of Culture**

Sunday, August 27, 12 to 4 p.m.

at the Conrad Mansion Museum, Hockaday Museum of Art, and the Museum at Central School

*See what's new at your museums and enjoy some of the Valley's best musicians*

*Enter drawings for great prizes*

*Call for Art*

North Valley Hospital is seeking donated artwork by fall from local artists of various media for our new facility opening in March 2007; artwork must be positive, healing, and soothing in design. For further information, contact Carol Blake at 863-3631 or Terri Dunn at 863-3513.

BOARD OF DIRECTORS

**Hockaday Museum Board of Directors**

Fred Leistikio, President  
Tabby Ivy, Vice-President  
Dave Handy, Treasurer  
Jane Wheeler, Secretary  
Margene Berry  
Janet Clark  
Ed Gilliland  
Jana Goodman  
Robert Lopp  
Carol McSweeney  
F.C. "Buz" Meyer  
Dave Mihalic  
Dick Solberg  
Tom Waggoner III  
Jackie Wildgen, Honorary Board Member

STAFF

**Associate Directors**

Donald Baughman      Mark Norley  
Beth Collier            Nicholas Oberling  
Janet Bierrum          James Udick  
Wes Hines                Rae Ellen Zeits

**Museum Staff**

Linda Engh-Grady, Executive Director/Curator  
Jeanna Nixon, Director of Communications/Marketing  
Kathy Martin, Director of Education  
Marti Jackson, Reception/Membership Services  
Mary Carlisle, Development Specialist  
Christian Mascho, Museum Services/Registrar  
Mike Evans, Museum Services

**Museum Volunteers**

James Udick, Archivist/Librarian

VOLUNTEERS

Hours

September through May:

Tuesday - Saturday, 10 am - 5 pm

June through August:

Tuesday - Friday: 10 am - 6 pm

Saturday: 10 am - 5 pm; Sunday: 12 pm - 4 pm

Admission

\$5 for adults

\$4 for seniors

\$2 for students

\$1 for ages 6-18

Members Always Free



The Hockaday Museum of Art is a proud member of:

- American Association for State and Local History
- American Association of Museums
- American Federation of Arts
- Flathead Convention and Visitors Bureau
- Glacier Country Regional Tourism Commission
- Kalispell Area Chamber of Commerce
- Museum and Art Gallery Directors Association of Montana
- Museums Association of Montana
- Whitefish Chamber of Commerce

*Miniatures Auction - Continued from page 8*

by Jeff Walker of Fort Shaw, Montana. This piece was purchased through the Museum's Art Acquisition Fund for its permanent collection. Past Purchase Award-winning artists include R.E. Pierce, Frank Hagel, Joe Abbrescia and Mark Ogle.

The Museum would like to thank American Printing, Red's Wines & Blues, and Fun Beverage for their generous sponsorship of this event, as well as the volunteers, board members and staff members who made this our most successful auction ever!

**Seeking Local Arts & Crafts for Off the Wall Gift Gallery**

The Museum is seeking new three dimensional arts and crafts to sell in its Off the Wall Gift Gallery, which features unique items made by local artists. All items are sold on consignment with two-thirds of the sale price going to the artist and one-third to the Museum's exhibit and education programs.

If you make pottery, jewelry, glass, wood, or other unique crafts and are interested in getting more information, contact Marti or [information@hockadaymuseum.org](mailto:information@hockadaymuseum.org) at 755-5268.

**Shop the Gift Gallery on-line!**

You can now shop the Museum's Off the Wall Gift Gallery on-line. The new web store features a variety of books, exhibition catalogs, banners, posters, t-shirts, and cards. All purchases benefit the Museum. Check it out at:

[www.hockadaymuseum.org/catalog](http://www.hockadaymuseum.org/catalog)

*Free Admission Days*

**Senior Citizen's Tour & Tea**

*Second Thursday of each month*

Free admission and refreshments for seniors.

*Sponsored by Sykes Pharmacy & Medical Arts Pharmacy*

**Student Saturday**

*Second Saturday of each month*

Free admission for students.

**Corporate Days**

*First Friday and Saturday of each month*

Free admission for employees of Business Members.



**HOCKADAY**  
**MUSEUM of ART**  
 Membership Information



*Children Reading*, by Jeanne Hamilton  
 (1919-1992) oil on canvas  
 Hockaday Museum Permanent Collection

*Bringing you the art and culture of Montana and the artists of Glacier National Park.*

- \_\_\_ Junior Member \$10 (Ages 6 to 18)
  - \_\_\_ Student Membership \$25
  - \_\_\_ Individual Member \$40
  - \_\_\_ Senior Individual Member \$35
  - \_\_\_ Family Membership \$60
  - \_\_\_ Associate Members \$75
  - \_\_\_ Friends of The Hockaday \$125
  - \_\_\_ Cultural Members \$250
  - \_\_\_ Heritage Members \$500
  - \_\_\_ Patron of the Arts \$1,000+
  - \_\_\_ Benefactor \$2,000+
  - \_\_\_ Sustainer \$5,000+
  - \_\_\_ Director's Circle \$10,000+
  - \_\_\_ School Membership \$100
  - \_\_\_ Business Donation \$150
  - \_\_\_ Corporate Sponsor \$250+
  - \_\_\_ Business Partner 500+
  - \_\_\_ Business Associate \$1,000+
  - \_\_\_ Corporate Benefactor \$2,000+
  - \_\_\_ Corporate Sustainer \$5,000+
- Hockaday Endowment Contribution:** \$ \_\_\_\_\_  
*(significant tax credit! See your accountant for details.)*  
**Ed Bailey Memorial Scholarship Fund:** \$ \_\_\_\_\_  
*(making access to art education available to everyone)*  
**Hockaday Museum Art Acquisition Fund:** \$ \_\_\_\_\_  
*(collecting for preservation and education)*

The Hockaday Museum is a non-profit 501(c)3 tax-exempt organization. Your donation is tax deductible in the amount allowable by law.

Your membership to the Hockaday Museum is an annual pass to stimulating lectures and programs, enjoyable social gatherings, original art education classes for children and adults, and regularly changing exhibits showcasing the art and culture of Montana and the artists of Glacier National Park.

Your membership card gives you free Museum visits, discounts on unique gifts created by local artists from the Off the Wall Gift Gallery, and advance notification about events and classes.

Your membership truly makes a difference in supporting the arts and culture in the Flathead Valley.

*The exhibition programs of the Hockaday Museum of Art are sponsored in part by the National Endowment for the Arts, Montana Arts Council, Montana Cultural Trust, and members of the Hockaday Museum.*

Name(s): \_\_\_\_\_  
 Business: \_\_\_\_\_  
 Address: \_\_\_\_\_  
 Phone: \_\_\_\_\_ Check # \_\_\_\_\_  
 \_\_\_\_\_ Visa/MC # \_\_\_\_\_ Exp. \_\_\_\_\_  
 Signature: \_\_\_\_\_

**THANK YOU FOR YOUR SUPPORT!**

**HOCKADAY MUSEUM of ART**  
 302 2nd Avenue East, Kalispell, Montana 59901  
 406-755-5268 - Fax 406-755-2023  
 information@hockadaymuseum.org - www.hockadaymuseum.org

Non-profit Org. U.S. Postage PAID Kalispell, MT 59901 Permit #4
--

*Complimentary Copy*